



ATX Aluminum Series

Rotary Vane Pumps For Tank Trucks and Transports

Design Features

Weighing 100 lbs. (45 kgs.) the aluminum ATX pump is ideal for light, clean, non-corrosive fluids compatible with aluminum. The light-weight transport pump works on most petroleum applications. Pump construction consists of grease lubricated ball bearings, Blackmer cartridge mechanical seals, Duravanes, hardened steel drive shaft with ductile iron rotor and cast iron liner and end discs.

Performance Capabilities

- Speeds up to 1,000 rpm
- Delivers up to 300 gpm (1,135 lpm)
- Maximum viscosity of 300 SSU (63 cSt)
- Operating Temperatures of 240°F (115°C)
- Parallel ports for easy piping
- Drain/Gauge Plugs

Options

- Pipe Flanges: 3" (80 mm) socket weld - aluminum or steel
- Three Mounting Bracket Positions
- Pneumatic actuated relief valve assembly
- Hydraulic Drive Option

Reduced Life Cycle Costs

The ATX series combines Blackmer's proven sliding vane technology with a replaceable cast iron liner and end discs for maximum pump performance and reduced life cycle costs.



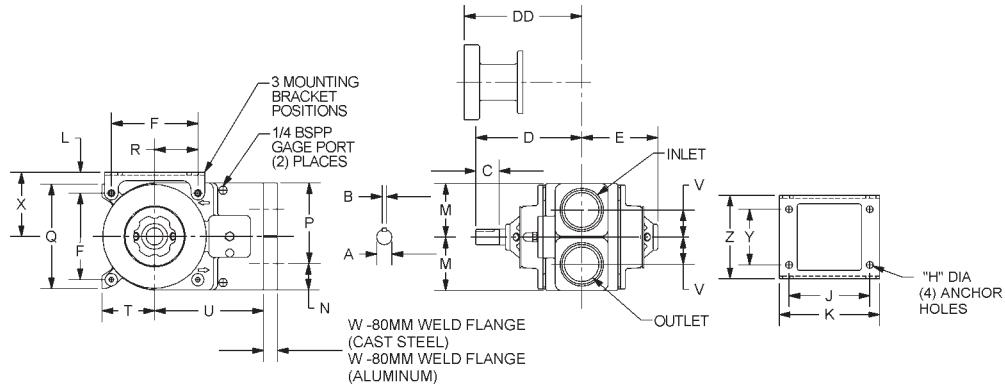
ATX300



ATX300-HYD with hydraulic motor adapter



ATX Aluminum Series Sliding Vane Pumps



Dimensions

| ATX300A | A | B | C | D | E | F | G | H | J | K | L | M |
|-------------|-------------------------------|-------------------------------|-------------------------------|-------------------------------|-------------------------------|---------------------------------|-------|-----------------------------|-------------------------------|--------------------------------|-------------------------------|---------------------------------|
| Inches | 1 ³ / ₈ | ²⁵ / ₆₄ | 2 ¹ / ₈ | 9 ¹ / ₂ | 6 ⁷ / ₈ | 7 ²⁵ / ₃₂ | 7 | ⁵ / ₈ | 7 ¹ / ₄ | 9 ¹ / ₃₂ | 1 ⁷ / ₈ | 4 ¹³ / ₁₆ |
| Millimeters | 34.9 | 9.9 | 54.0 | 241.3 | 174.6 | 197.6 | 177.8 | 15.9 | 184.2 | 229.4 | 47.6 | 122.2 |

| ATX300A | N | P | Q | R | T | U | V | W | X | Y | Z | DD* |
|-------------|-------------------------------|-------------------------------|-------------------------------|-------------------------------|-------------------------------|-------------------------------|--------------------------------|-------------------------------|-------------------------------|-------|-------------------------------|---------------------------------|
| Inches | 2 ³ / ₈ | 7 ¹ / ₄ | 9 ³ / ₈ | 3 ⁷ / ₈ | 4 ³ / ₄ | 9 ³ / ₄ | 2 ⁷ / ₁₆ | 1 ¹ / ₄ | 5 ³ / ₄ | 5 | 7 ¹ / ₂ | 10 ⁹ / ₁₆ |
| Millimeters | 60.3 | 184.2 | 238.1 | 98.4 | 120.7 | 247.7 | 61.9 | 31.8 | 146.1 | 127.0 | 190.5 | 268.3 |

* ATX300A - HYD Models use a 15 tooth spline drive coupling

Maximum Operating Limits

| Pump Model | Flowrate | | | Speed | Viscosity | | Differential Pressure | | Working Pressure | | Temperature | |
|------------|----------|-------------------|-------|-------|-----------|-----|-----------------------|-----|------------------|------|-------------|-----|
| | US gpm | m ³ /h | LPM | RPM | SSU | cSt | PSI | BAR | PSI | BAR | °F | °C |
| ATX300A | 300 | 68 | 1,135 | 1,000 | 300 | 63 | 125 | 8.6 | 175 | 12.1 | 240 | 115 |

Performance Data

| Pump Model | Pump Speed | Flow Rate 50 psi {3.45 bar} | |
|------------------------|------------|--------------------------------|-------|
| | RPM | GPM | LPM |
| ATX300A ATX300A-HYD | 500 | 137 | 519 |
| | 750 | 212 | 802 |
| | 1,000 | 293 | 1,109 |

Sales Information and Equipment Application Assistance

Blackmer has a world wide distribution network to assist you in specifying any of our family of pumps, compressors and other equipment for your application. For more information or to find the distributor nearest to you, please contact us at the telephone, fax or internet address listed below.

Distributed by:

World Headquarters

1809 Century Avenue SW
Grand Rapids, MI 49503-1530 USA
T 616.241.1611 F 616.241.3752

European Headquarters

ZI la Plaine des Iles, rue des Caillottes, 89000
Auxerre, FRANCE
T +33.3.86.49.86.30 F +33.3.86.46.42.10



www.blackmer.com