

LG1 Series

Sliding Vane Pumps for cylinder filling

Reliability

Durable pumps for fast and quiet operation. Sliding-vane design provides sustained performance and trouble free operation.

Unique Features

The latest 6-vane design contributes to reduced noise levels in the pumps. All models have 1" NPT tapped parts and use an exclusive "combination" valve that acts as both a back-to-tank bypass valve and an internal safety valve (no separate bypass valve is needed). The LGF1 pumps accept standard C-face mounted motors.

Flowrates

At motor speed 1750, the LG1 Series pumps provide approximately 8.0 gpm (30.3 lpm) at 50 PSI (3.4 bar) and the LG1P models provide 13 gpm (49.2 lpm) at 50 PSI (3.4 bar).

Applications

Cylinder filling, motor fueling, small vaporizers and dispensers.



LGF1E and LGF1PE model



LGB1E and LGB1PE model



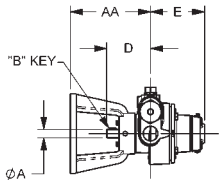
cylinder filling

Blackmer
A DOVER COMPANY

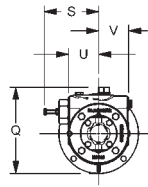


LG1 Series

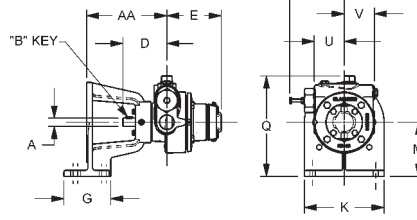
Sliding Vane Pumps



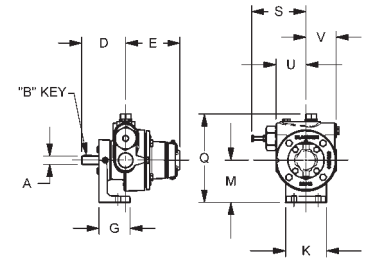
*LGF Model non-footed



**LGF Model footed



LGB Model



Dimensions

PUMP MODEL		A	B	D	E	G	K	M	Approx. WT.		
									lbs	kg	
*LGF1E	C-FACE	IN.	11/16	3/16	3 11/16	4 1/2	—	—	39	17.7	
LGF1PE	MOUNT	MM	-	-	93.7	114.3	—	—			
**LGF1E	C-FACE	IN.	11/16	3/16	3 11/16	4 1/2	3 7/8	6 5/8	39	17.7	
LGF1PE	MOUNT	MM	-	-	93.7	114.3	98.4	168.3			114.3
LGB1E	BRKT	IN.	11/16	3/16	3 11/16	4 1/2	2 9/16	3 3/8	19	8.6	
LGB1PE	MOUNT	MM	-	-	93.7	114.3	65.1	85.7			88.9
PUMP MODEL		P	Q	R	S	U	V	AA			
*LGF1E	C-FACE	IN.	—	7 1/8	—	4 1/2	2 1/2	2 1/2	6 11/16		
	MOUNT	MM	—	181.0	—	114.3	63.5	63.5	169.9		
**LGF1E	C-FACE	IN.	—	8 5/16	—	4 1/2	2 1/2	2 1/2	6 11/16		
	MOUNT	MM	—	211.1	—	114.3	63.5	63.5	169.9		
LGB1E	BRKT	IN.	—	7 5/16	—	4 1/2	2 1/2	2 1/2	—		
	MOUNT	MM	—	185.7	—	114.3	63.5	63.5	—		

Performance Data

ASSEMBLED PUMP UNITS		PUMP AND MOTOR SPEED (RPM) ¹	APPROX DELIVERY OF PROPANE @ DIFF PRESSURES AND PUMP SPEEDS				MAXIMUM DIFFERENTIAL PRESSURE		MAXIMUM WORKING PRESSURE ²		TYPICAL MOTOR ³	MOTOR SIZE FOR STANDARD BASE ⁴	
MODEL	RV SETTING		50 PSI (3.5 Bar)		100 PSI 6.9 (Bar)		PSI	Bar	PSI	Bar	HP	MINIMUM FRAME	MAXIMUM FRAME
			GPM	LPM	GPM	LPM							
LGF1	105 PSI (7.2 Bar)	1750	8.0	30.3	6.0	22.7	125	8.6	350	24.1	1	56C	184C ⁴
LGB1-DM	105 PSI (7.2 Bar)	1750	8.0	30.3	6.0	22.7	125	8.6	350	24.1	1	56	184
LGF1P	120 PSI (8.3 Bar)	1750	13.0	49.2	10.0	37.9	125	8.6	350	24.1	1.5	56C	184C ⁴
LGB1P-DM	120 PSI (8.3 Bar)	1750	13.0	49.2	10.0	37.9	125	8.6	350	24.1	1.5	56	184

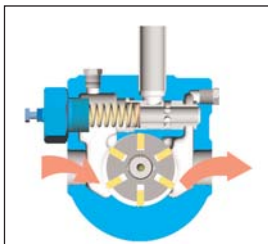
¹ Maximum pump speed is 1750 RPM. Slower electric motor speeds may be used with a corresponding reduction in flowrate

² Maximum rated working pressure is 350 psi (24.1 Bar) for LPG and NH3 (limited by U.L. and N.F.P.A. 58)

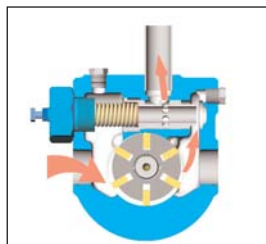
³ Motors may be specified from dimension charts above and electric motor price list No. 10-MTRG-01 (explosion proof manual start switch for 1 and 1½ horsepower single phase motors also available).

⁴ Pump flange accepts NEMA C-face motors with 5 7/8" bolt circle diameter. Pump flange will not accept 182TC or 184TC frames

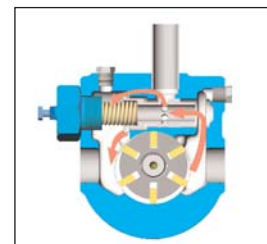
Combination relief/ bypass valve



Normal Operation
Valve is completely closed during normal operation with discharge line open



Back-to-Tank Bypassing
Discharge pressure exceeding the valve setting opens valve to second stage, returning all or part of pump flow back to supply tank



Pressure Relief
If back-to-tank line is closed, valve opens to third stage, passing flow back to inlet side of pump

Distributed By:

